

# SL-928-S-94

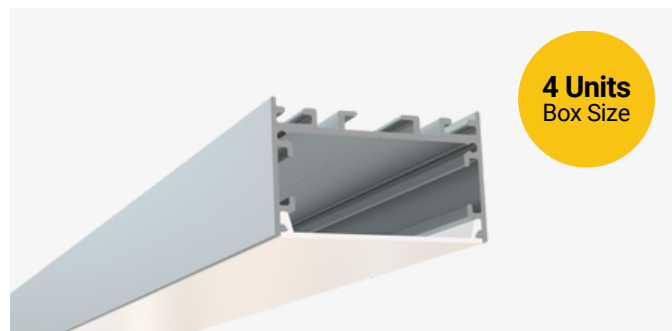
## Surface / Pendant Mount LED Channel

### Description

The SL-928-S-94 is a surface or pendant mount LED channel. It includes a channel, lens, and end caps. Available in 94" sections.

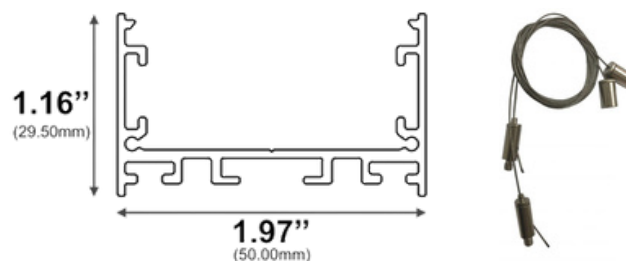
### Features

- Compatible with all of EnoLED's LED Tapes
- Hotspot-free with EnoLED's COB Tape
- Aluminum Finish
- Available in 94" sections
- Field Cuttable
- Includes a channel, lens, and end caps
- Max tape width: 1.80" (45.72mm)



### Dimensions

#### SL-928-S-94



**Width (outside):** 1.97" (50.00mm)

**Width (inside):** 1.80" (45.72mm)

**Height:** 1.16" (29.50mm)

**Length:** 94" (2.38m)

### Ordering Information

Ordering Code	Description
SL-928-S-94	94" Channel kit - 1 aluminum channel, 1 frosted cover lens, 2 end caps
SL-928-SC-94	94" Channel kit - 1 aluminum channel, 1 clear cover lens, 2 end caps
SL-928-S-94-FL	Cover Lens (Frosted)
SL-928-S-94-CL	Cover Lens (Clear)
SL-928-S-94-EC-P2	End caps - 2 units pack
SL-928-S-94-EC-P10	End caps - 10 units pack
SL-928-S-94-MC-P3	Mounting clips - 3 units pack
SL-928-S-94-PK	Pendant mounting kit