

SL-504-S-94

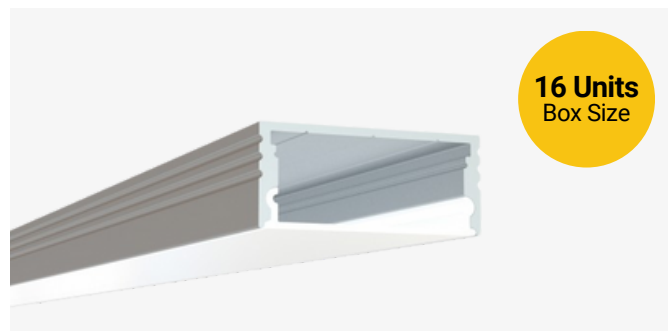
Surface Mount LED Channel

Description

The SL-504-S-94 is a surface mount LED channel. It includes a channel, lens, end caps, and mounting clips. Available in 94" sections.

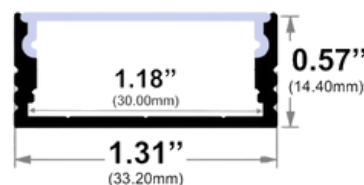
Features

- Compatible with all of EnoLED's LED Tapes
- Hotspot-free with EnoLED's COB Tape
- Aluminum Finish
- Available in 94" sections
- Field Cuttable
- Includes a channel, lens, end caps, and mounting clips
- Max tape width: 1.18" (30.00mm)



Dimensions

SL-504-S-94



Width (outside): 1.31" (33.20mm)

Width (inside): 1.18" (30.00mm)

Height: 0.57" (14.40mm)

Length: 94" (2.38m)

Ordering Information

| Ordering Code | Description |
|--------------------|--|
| SL-504-S-94 | 94" Channel kit - 1 aluminum channel, 1 frosted cover lens, 2 end caps, 3 mounting clips |
| SL-504-S-94-FL | Cover Lens (Frosted) |
| SL-504-S-94-EC-P2 | End caps - 2 units pack |
| SL-504-S-94-EC-P10 | End caps - 10 units pack |
| SL-504-S-94-MC-P3 | Mounting clips - 3 units pack |