

SL-430-S-94

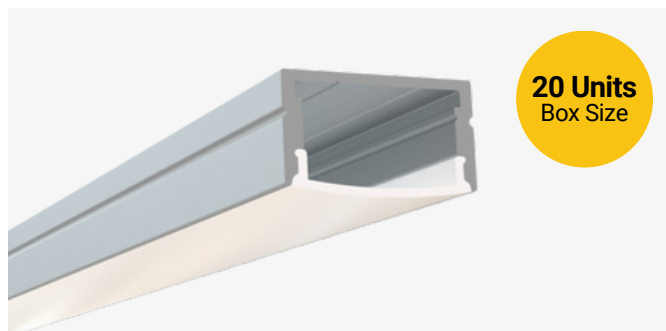
Surface Mount LED Channel

Description

The SL-430-S-94 is a surface mount LED channel. Designed to deliver hotspot-free lighting. It includes a channel, lens, end caps, and mounting clips. Available in 94" sections.

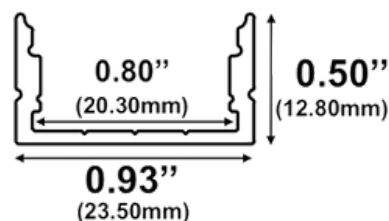
Features

- Compatible with all of EnoLED's LED Tapes
- Hotspot-free with EnoLED's COB Tape
- Aluminum Finish
- Available in 94" sections
- Field Cuttable
- Includes a channel, lens, end caps, and mounting clips
- Max tape width: 0.80" (20.30mm)



Dimensions

SL-430-S-94



Width (outside): 0.93" (23.50mm)

Width (inside): 0.80" (20.30mm)

Height: 0.50" (12.80mm)

Length: 94" (2.38m)

Ordering Information

Ordering Code	Description
SL-430-S-94	94" Channel kit - 1 aluminum channel, 1 frosted cover lens, 2 end caps, 3 mounting clips
SL-430-SC-94	94" Channel kit - 1 aluminum channel, 1 clear cover lens, 2 end caps, 3 mounting clips
SL-430-S-94-CL	Cover Lens (Frosted)
SL-430-SC-94-CL	Cover Lens (Clear)
SL-430-S-94-EC-P2	End caps - 2 units pack
SL-430-S-94-EC-P10	End caps - 10 units pack
SL-430-S-94-MC-P3	Mounting clips - 3 units pack