

# SL-179-S-94

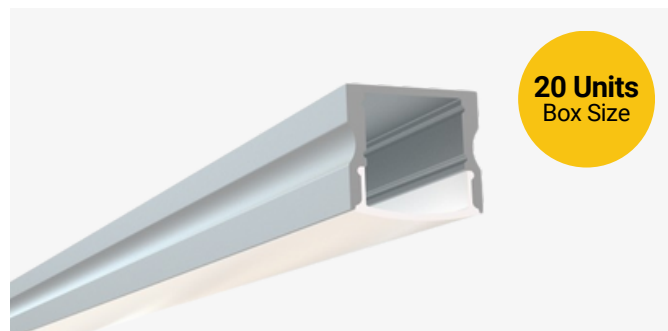
## Surface Mount Channel

### Description

The SL-179-S-94 is a surface mount LED channel. Designed to deliver hotspot-free lighting. It includes a channel, lens, end caps, and mounting clips. Available in 94" sections.

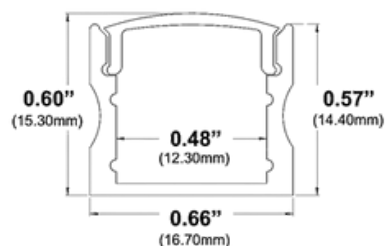
### Features

- Compatible with all of EnoLED's LED Tapes
- Hotspot-free with EnoLED's COB Tape
- Aluminum Finish
- Available in 94" sections
- Field Cuttable
- Includes a channel, lens, end caps, and mounting clips
- Max tape width: 0.47" (12.10mm)



### Dimensions

#### SL-179-S-94



**Width (outside):** 0.60" (15.30mm)

**Width (inside):** 0.48" (12.30mm)

**Height:** 0.60" (15.30mm)

**Length:** 94" (2.38m)

### Ordering Information

| Ordering Code      | Description  |
|--------------------|--|
| SL-179-S-94        | 94" Channel kit - 1 aluminum channel, 1 frosted cover lens, 2 end caps, 3 mounting clips |
| SL-179-SC-94       | 94" Channel kit - 1 aluminum channel, 1 clear cover lens, 2 end caps, 3 mounting clips   |
| SL-179-S-94-FL     | Cover Lens (Frosted)   |
| SL-179-S-94-CL     | Cover Lens (Clear)   |
| SL-179-S-94-EC-P2  | End caps - 2 units pack  |
| SL-179-S-94-EC-P10 | End caps - 10 units pack   |
| SL-179-S-94-MC-P3  | Mounting clips - 3 units pack  |