

SL-118-BB-94

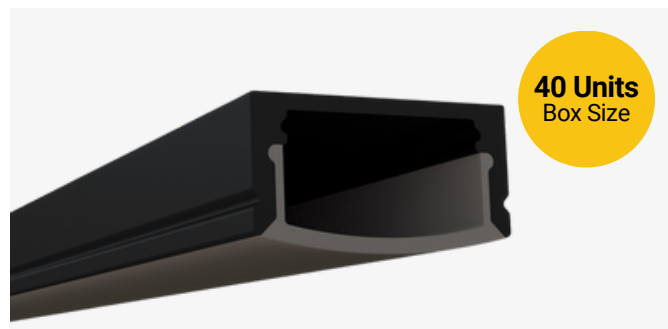
Low-Profile Surface Mount Channel

Description

The SL-118-BB-94 is a black finish, black lens, small-size, surface mount LED channel. It includes a channel, lens, end caps, and mounting clips. Available in 94" sections.

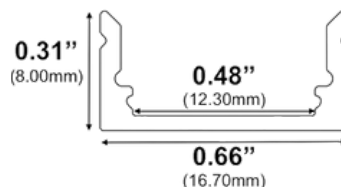
Features

- Compatible with all of EnoLED's LED Tapes
- Hotspot-free with EnoLED's COB Tape
- Black finish and lens
- Available in 94" sections
- Field Cuttable
- Includes a channel, lens, end caps, and mounting clips
- Max tape width: 0.48" (12.30mm)



Dimensions

SL-118-BB-94



Width (outside): 0.66" (16.70mm)

Width (inside): 0.48" (12.30mm)

Height: 0.31" (8.00mm)

Length: 94" (2.38m)

Ordering Information

Ordering Code	Description
SL-118-BB-94	94" Channel kit - 1 black finish channel, 1 black cover lens, 2 end caps, 3 mounting clips
SL-118-BB-94-BL	Cover Lens (Black)
SL-118-BB-94-EC-P2	End caps - 2 units pack
SL-118-BB-94-EC-P10	End caps - 10 units pack
SL-118-BB-94-MC-P3	Mounting clips - 3 units pack