

RL-778-S-94

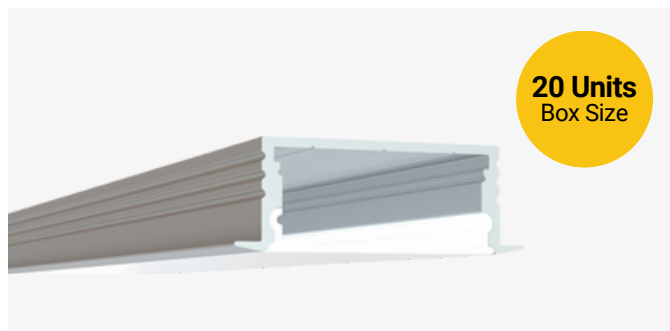
Recessed Mount LED Channel

Description

The RL-778-S-94 is recessed mount LED channel. It includes a channel, lens, and end caps. Available in 94" sections.

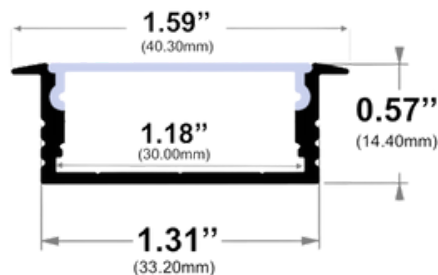
Features

- Compatible with all of EnoLED's LED Tapes
- Hotspot-free with most LED Tapes
- Aluminum Finish
- Available in 94" sections
- Field Cuttable
- Includes a channel, lens, and end caps
- Max tape width: 1.18" (30.00mm)



Dimensions

RL-778-S-94



Width (outside): 1.31" (33.20mm)

Width (inside): 1.18" (30.00mm)

Height: 0.57" (14.40mm)

Length: 94" (2.38m)

Ordering Information

Ordering Code	Description
RL-778-S-94	94" Channel kit - 1 aluminum channel, 1 frosted cover lens, 2 end caps
RL-778-S-94-FL	Cover Lens (Frosted)
RL-778-S-94-EC-P2	End caps - 2 units pack
RL-778-S-94-EC-P10	End caps - 10 units pack