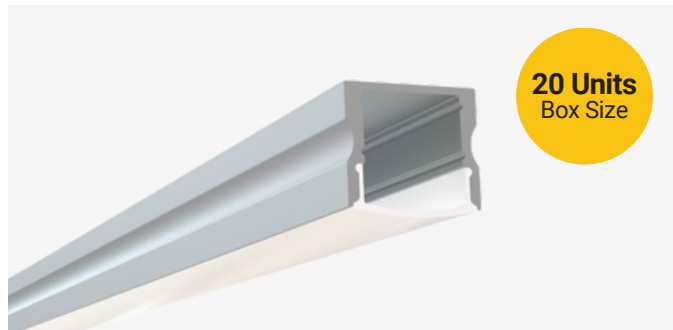


# SL-179-S-94

## Surface Mount Channel

### Description

The SL-179-S-94 is a surface mount LED channel. Designed to deliver hotspot-free lighting. It includes a channel, lens, end caps, and mounting clips. Available in 94" sections.

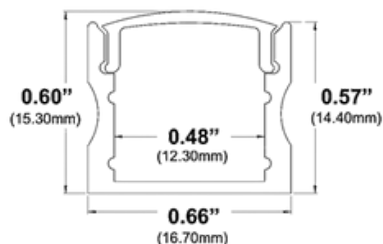


### Features

- Compatible with all of EnoLED's LED Tapes
- Hotspot-free with EnoLED's COB Tape
- Aluminium Finish
- Available in 94" sections
- Field Cuttable
- Includes a channel, lens, end caps, and mounting clips
- Max tape width: 0.47" (12.10mm)

### Dimensions

#### SL-179-S-94



**Width (outside):** 0.66" (16.70mm)

**Width (inside):** 0.48" (12.30mm)

**Height:** 0.60" (15.30mm)

**Length:** 94" (2.38m)

### Ordering Information

Ordering Code	Description
SL-179-S-94	94" Channel kit - Includes 1 channel, 1 cover lens, 2 end caps, 3 mounting clips and screws
SL-179-S-94-CL	94" Cover lens
SL-179-S-94-EC-P2	End caps - 2 units pack
SL-179-S-94-EC-P10	End caps - 10 units pack
SL-179-S-94-MC-P3	Mounting clips - 3 units pack