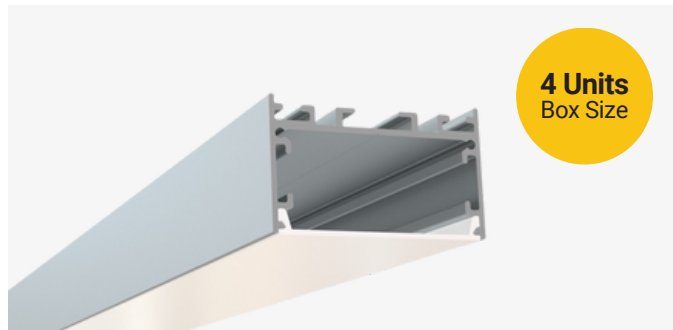


SL-928-S-94

Surface / Pendant Mount LED Channel

Description

The SL-928-S-94 is a surface or pendant mount LED channel. It includes a channel, lens, end caps, and mounting clips. Available in 94" sections.

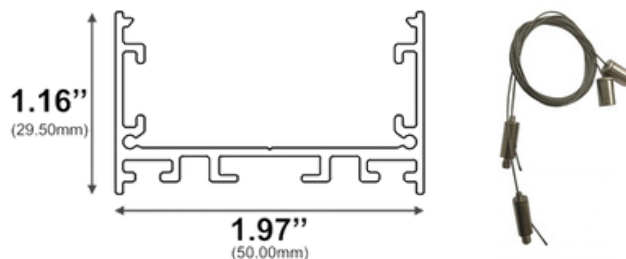


Features

- Compatible with all of EnoLED's LED Tapes
- Hotspot-free with EnoLED's COB Tape
- Aluminium Finish
- Available in 94" sections
- Field Cuttable
- Includes a channel, lens, end caps, and mounting clips
- Max tape width: 1.80" (45.72mm)

Dimensions

SL-928-S-94



Width (outside): 1.97" (50.00mm)

Width (inside): 1.80" (45.72mm)

Height: 1.16" (29.50mm)

Length: 94" (2.38m)

Ordering Information

Ordering Code	Description
SL-928-S-94	94" Channel kit - Includes 1 channel, 1 cover lens, 2 end caps, 3 mounting clips and screws
SL-928-S-94-CL	94" Cover lens
SL-928-S-94-EC-P2	End caps - 2 units pack
SL-928-S-94-EC-P10	End caps - 10 units pack
SL-928-S-94-MC-P3	Mounting clips - 3 units pack
SL-928-S-94-CK	Pendant mounting kit - Includes 2 channel mounts, 2 ceiling mounts and 2 wires (59") - sold separately