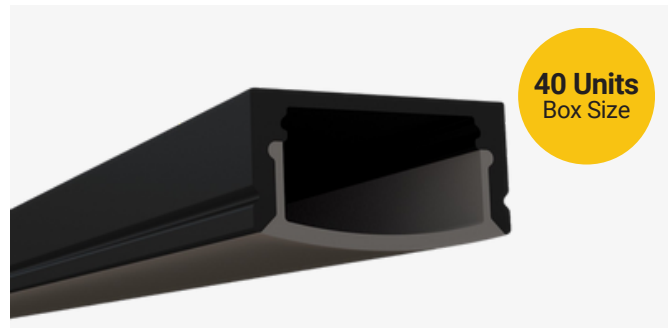


# SL-118-BB-94

## Low-Profile Surface Mount Channel

### Description

The SL-118-BB-94 is a black finish, black lens, small-size, surface mount LED channel. It includes a channel, lens, end caps, and mounting clips. Available in 94" sections.

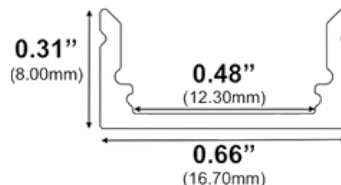


### Features

- Compatible with all of EnoLED's LED Tapes
- Hotspot-free with EnoLED's COB Tape
- Black Finish
- Available in 94" sections
- Field Cuttable
- Includes a channel, lens, end caps, and mounting clips
- Max tape width: 0.48" (12.30mm)

### Dimensions

#### SL-118-BB-94



**Width (outside):** 0.66" (16.70mm)

**Width (inside):** 0.48" (12.30mm)

**Height:** 0.31" (8.00mm)

**Length:** 94" (2.38m)

### Ordering Information

Ordering Code	Description
SL-118-BB-94	94" Channel kit - Includes 1 channel, 1 cover lens, 2 end caps, 3 mounting clips and screws
SL-118-BB-94-CL	94" Cover lens
SL-118-BB-94-EC-P2	End caps - 2 pair pack includes 2 open, 2 closed
SL-118-BB-94-EC-P10	End caps - 10 pair pack includes 10 open, 10 closed
SL-118-BB-94-MC-P3	Mounting clips - 3 units pack